

可靠的专用仪表 RELIABLE SPECIAL DESIGNED INSTRUMENT



标准配置 Standard configuration	可选装置 Optional
计时表 Hour meter	驾驶室警示灯 Warning light
机油压力报警 Horn Oil pressure alarm	高排气装置 High air exhausting device
二片多路阀 Control valve	双空滤 Double air cleaner
全液压助力转向 Whole hydraulic-powered steering	全悬浮座椅 Suspension seat
橡胶脚踏板 Rubber pad	货叉加长套 Fork extension
后视镜 Backrest	暖风机 Heater
倒车镜 Rear view mirror	实心轮胎 Solid tyre
组合灯 (LED信号灯) Front combined lamp (LED light)	加宽叉车架 Widen fork carriage
传动油滤清器 Transmission oil filter	挡风玻璃 Wind shield
发动机熄火装置 Engine flame out device	净化消声器 Purifying muffler
脚踏驻车制动踏板 Ratchet type parking brake	火灾报警喇叭 Fire extinguisher muffer
水温表 Water temperature meter	灭火器 Fire extinguisher
随车工具 Driver's tool	后工作灯 Rear working light
组合尾灯 (LED) Rear combined lamp(LED)	空调 (部分车型) Air conditioner (certain type)
倒车蜂鸣器 Reversing buzzer	行车OPS OPS (travelling function)
倾斜油缸锁止阀 Tilt lock valve	扭矩转换器油温表 Torque converter oil temperature meter
倾斜可调转向柱 Tilt adjustable steering column	倾斜缸衬套 Tiltting cylinder sleeve
后视镜 Back view mirror	转向缸衬套 Steering cylinder sleeve
护顶架 Overhead guard	用户指定颜色 User-specified color
标准叉 Standard fork	选装属具 Optional attachments
空档开关 Neutral gear switch	吊具 Sling
液压油滤清器 Hydraulic circuit oil filter	全LED灯 Full LED light ass'y
电液换向 Electro-hydraulic changing-over	电泵急开关 Power switch
智能换挡 Intelligent shift	倒车提醒喇叭 Reversing voice speaker
限速阀 Speed-limiting valve	通用钥匙 Universal key
油量表 Oil level gauge	超速 10km/h报警 Overspeed 10km/h alarm
充电指示灯 Charging indicator	电风扇 Electric fan
宽视野门架 Wide view mast	全套OPS(含行走OPS和起升OPS) OPS(travelling function and loading function)
进气装置 Air intaking device	
花紋耐用轮胎 Durable tire with decorative pattern	
起升和倾斜操纵杆 Lifting and tilting operating handles	
牵引销 Traction pin	
半悬浮座椅 Semi-suspension seat	
液压制动踏板 Hydraulic oil dipstick	
护顶架雨槽 Overhead guard rain cover	
变矩器油标尺 Torque converter oil dipstick	
组合仪表 Combined instrument	

HELI 安徽合力股份有限公司
ANHUI HELI FCL, LTD.

地址: 中国合肥经开区兴火大道668号
ADD: NO. 668 Fangxing Street, Economical & Development Zone, Hefei, P.R. China

电话: (86 551) 83632133, 83648005, 83689000
TEL: (86 551) 83632133, 83648005, 83689000

传真: (86 551) 83633431
FAX: (86 551) 83633431

400 SERVICE: 4001-800761
400 SERVICE: 4001-800761

网址: http://www.helichina.com
WEBSITE: http://www.helichina.com

授权经销商 AUTHORIZED DEALER

设计/制图: 合力商务 2014.03

* 本车保留更改产品设计和规格的权利, 恕不另行通知。
* Our products are subject to improvements and changes without notice.

5-10 t G系列
内燃平衡重式叉车
G SERIES INTERNAL COMBUSTION
COUNTERBALANCED FORKLIFT TRUCK



G series / 智能·环保 INTELLIGENT ENVIRONMENT-FRIENDLY

HELI
中国合力 提升未来

连续23年叉车产销量中国第一
TOP1 FORKLIFT MANUFACTURER AND SALES IN CHINA FOR CONSECUTIVE 23 YEARS

G系列内燃平衡重式叉车
G SERIES INTERNAL COMBUSTION
COUNTERBALANCED FORKLIFT TRUCK

5-10 t

八大技术特性显著提升
technical features remarkably improved

减震 Damping

- 护顶架(驾驶室)全悬浮减震设计和动力系统震动传递的优化设计;降低整车的振动,减轻驾驶员疲劳程度。
- With suspension damping structure on overhead guard(cab) and optimized design for the transmission, the whole truck's vibration reduced a lot and relieve driver's fatigue greatly.

降噪 Noise reduction

- 全密封驾驶室与发动机周边附件优化设计,降低驾驶员耳边噪音及整车声功率级。
- Equipped with fully sealed cab and optimize designed parts around the engine, noise nearby ear and the truck sound level are reduced greatly.

散热 Heat dissipation

- 散热系统合理优化,冷却性能大幅提升,从而提高变速箱、发动机等关键零部件的可靠性、耐久性。
- With the optimized cooling system and great cooling performance, highly improved the reliability and durability of the transmission and engine, etc, many key parts.

节能降耗 Energy efficiency

- 采用优化设计的液压系统,凸显节能高效,有效降低整车的燃油消耗。
- With optimized hydraulic system, the truck is more energy-efficient and lower fuel consumption.



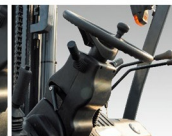
独立集成电控箱
Independent integrated electric cabinet



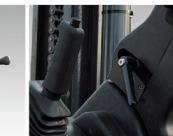
标配LED信号灯
LED signal (standard configuration)



棘齿式驻车制动器
Ratchet type parking brake



智能换挡
Intelligent gear shifting



方向盘锁紧机构
Steering wheel lock mechanism



燃油箱盖带锁
Locked fuel tank cover



文件夹
Folder



内置式暖风机(选配)
Built-in heater (optional)

舒适性 Comfort

- 融入交互式人机工程设计,提升操作舒适性;配备宽视野起重系统,改善视野。
- Man-machine engineering design improves operation comfort; wide view lifting system improves vision.

智能换挡 Intelligent gear shifting

- 整车标配电液换挡系统,操作省力、方便;升级全新智能换挡系统,防止二档起步,提高变速箱的工作可靠性。
- With electronic-hydraulic reversing system as standard configuration, make operation more light and easy; The updated new intelligent gear shifting system could avoid starting with second gear, improves the transmission box's reliability.

维护性 Maintainability

- 车体内部分区更宽敞,零部件位置布置更合理,机架开启角度增大至80°,整机维修性更佳。
- Wider internal space, more reasonable parts layout and 80°hood opening angle make maintenance easy.

可靠性 Reliability

- 车架、门架等核心结构件采用CAE正向设计,使其强度大幅提升,整车更坚固。
- Key parts like frame and mast apply CAE top-down design to improve their strength and make the truck tough.

